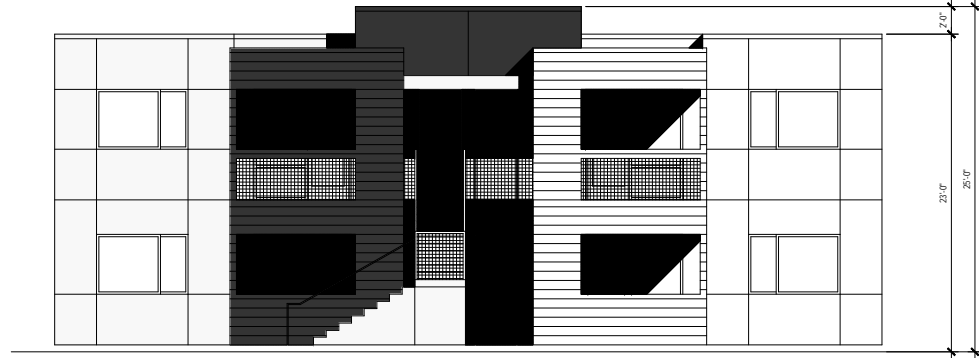




GRaber - RASMUSSEN  
architects

1725 J Street  
Sacramento, CA 95811  
916.444.6992  
info@graber-rasmussen.com  
www.graber-rasmussen.com

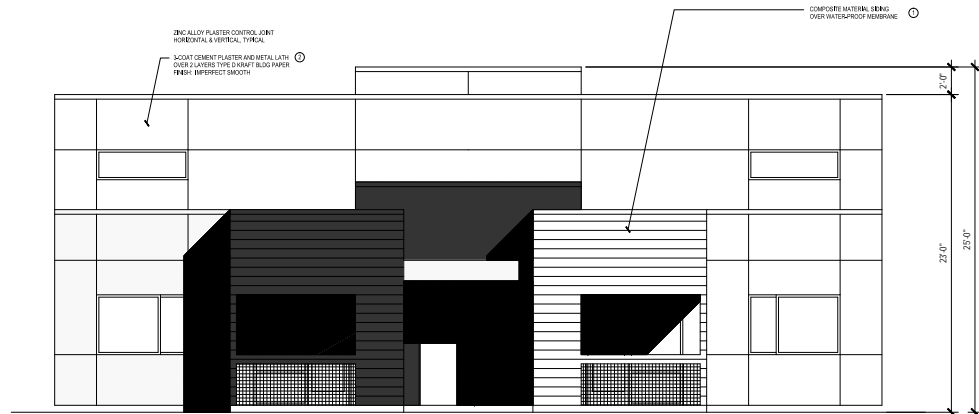
BRADSHAW AT FOLSOM APARTMENTS  
APN 075-0040-025 & 040  
SACRAMENTO COUNTY



BLDG C SOUTH ELEVATION  
1/4" = 1'-0"

COLOR / MATERIALS PALLETTE

- CEMENT PLASTER ○ SHERWIN WILLIAMS SW 7028 BLACK FOX
- CEMENT PLASTER ○ SHERWIN WILLIAMS SW 7014 EIDER WHITE
- WINDOW SYSTEM ○ MANUFACTURER'S FINISH
- METAL DOOR & FRAME ○ MATCH ADJACENT FINISH COLOR
- METAL GARAGE DOOR ○ SHERWIN WILLIAMS SW 7028 BLACK FOX



BLDG C NORTH ELEVATION  
1/4" = 1'-0"



THE DESIGN AND INFORMATION CONTAINED IN THESE PLANS AND THE SPECIFICATIONS IN CONNECTION HERewith ARE THE SOLE PROPERTY OF THE ARCHITECT. REPRODUCTION OR OTHER USE OF THESE PLANS WITHOUT THE EXPRESS PERMISSION OF THE ARCHITECT IS PROHIBITED. THIS DRAWING IS NOT TO BE USED FOR CONSTRUCTION UNLESS SIGNED BY THE ARCHITECT AND DATE APPROVED BY ALL AGENCIES HAVING JURISDICTION.

THE ARCHITECT DOES NOT REPRESENT THAT THESE PLANS OR THE SPECIFICATIONS IN CONNECTION THEREWITH ARE SUITABLE, WHETHER OR NOT MODIFIED, FOR ANY OTHER SITE, THAN THE ONE FOR WHICH THEY WERE SPECIFICALLY PREPARED. FOR THESE PLANS AND SPECIFICATIONS IF THEY ARE USED IN WHOLE OR IN PART AT ANY OTHER SITE.

DRAWING DATE APRIL 17, 2018

REVISION  
▲  
△

A8